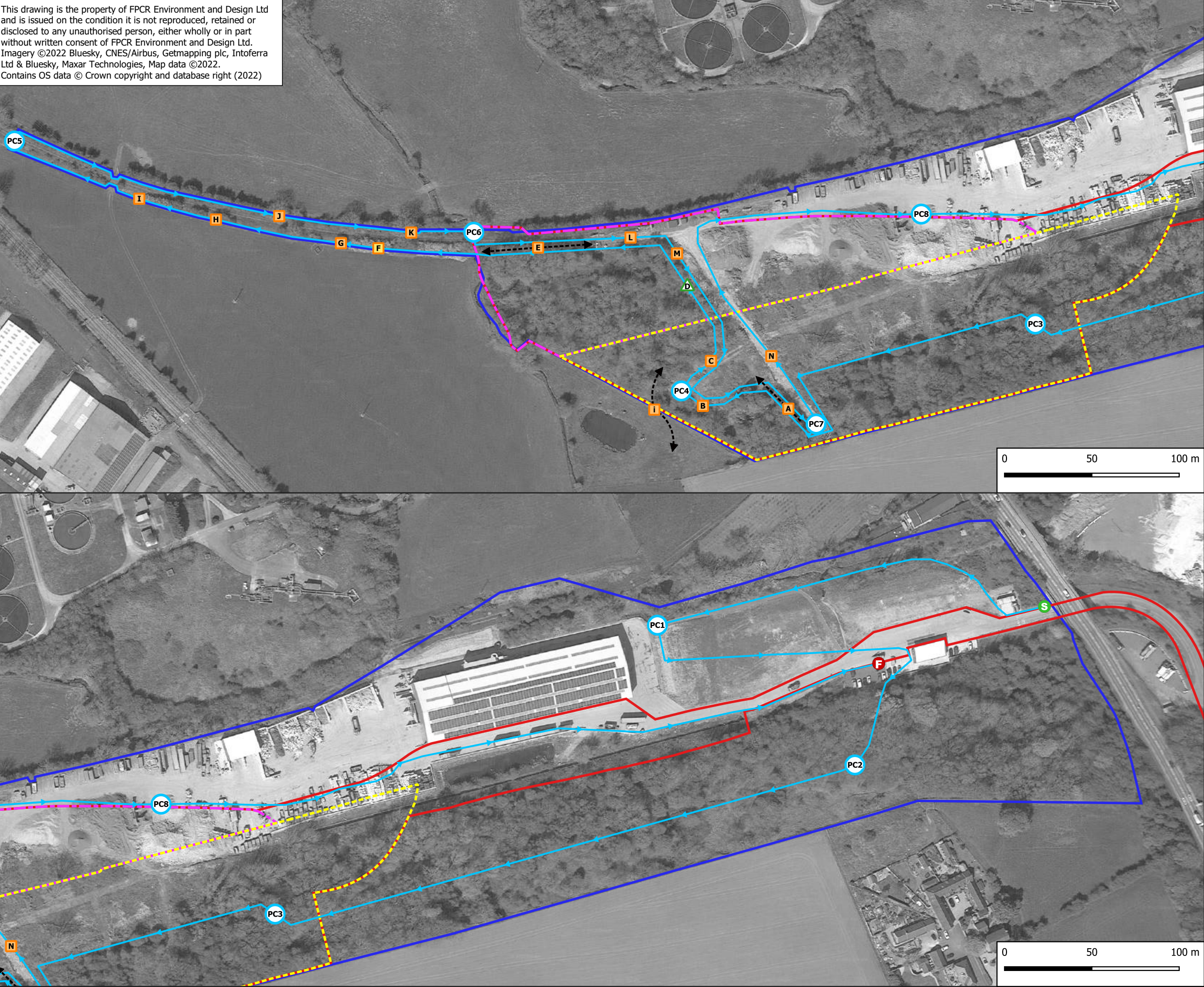


This drawing is the property of FPCR Environment and Design Ltd and is issued on the condition it is not reproduced, retained or disclosed to any unauthorised person, either wholly or in part without written consent of FPCR Environment and Design Ltd. Imagery ©2022 Bluesky, CNES/Airbus, Getmapping plc, Intoferra Ltd & Bluesky, Maxar Technologies, Map data ©2022. Contains OS data © Crown copyright and database right (2022)



Key

SRRRP Planning Application\*Red Line Boundary

Ecology Survey Area

Aggregate Recovery Facility (ARF) Boundary

Energy Recovery Facility (ERF) Boundary

Start point

Start Point

Point Count Location (with reference)

Transect Route

Flight Path

Bat Contact (with reference\*)

Common Pipistrelle

Soprano Pipistrelle

Myotis Species

Date	21/04/2021
Start Time	20:15
End Time	22:15
Sunset	20:15
Start Temp	10C
End Temp	7C
Cloud Cover	0%
Wind	2
Rain	0

Ref.	Time	Species	Behaviour	Passes	Comments
PC1	20:20 - 20:25	No Bats			
PC2	20:31 - 20:36	No Bats			
PC3	20:43 - 20:48	No Bats			
A	20:52	C.pip	Foraging	3	
B	20:55	C.pip	Foraging	1	NV
PC4	20:55 - 21:00				
i	20:57	C.pip	Foraging	3	
C	21:02	C.pip	Foraging	3	NV
D	21:02	Myotis sp.	Foraging	2	NV
E	21:04	C.pip	Foraging	Constant	
F	21:07	S.pip	Pass	1	NV
G	21:09	C.pip	Foraging	3	NV
H	21:14	C.pip	Foraging	2	NV
I	21:15	C.pip	Foraging	1	NV
PC5	21:18 - 21:23				
ii	21:22	C.pip	Pass	1	NV
J	21:30	C.pip	Foraging	Constant	NV
K	21:36	C.pip	Foraging	2	NV
PC6	21:38 - 21:43				
iii	21:39	C.pip	Foraging	2	NV
iv	21:40	Pip.sp.	Foraging	2	NV
L	21:45	C.pip	Foraging	6	NV
M	21:49	C.pip	Foraging	2	NV
PC7	21:52 - 21:57				
v	21:53	C.pip	Foraging	1	NV
N	21:58	C.pip	Foraging	1	NV
PC8	22:01 - 22:06				
vi	22:01	C.pip; S.pip	Foraging	Constant	NV

\* Lower case numerals denote bat contact within point count

A	29.09.22	Minor amendments	NJL/NJL
-	21.02.22	Initial draft	LG/NJL
rev	date	comment	dmn/chk

client

R&P Clean Power Limited

project

Swadlincote Resource Recovery Park (SRRP)

drawing title

BAT TRANSECT SURVEY - APRIL 2021

drawing / figure number

7233-ES-8.5-01

Date printed

29/9/2022

FPCR Environment and Design Ltd, Lockington Hall, Lockington, Derby, DE74 2RH t:01509 672 772 f:01509 674 565 e: mail@fpcr.co.uk w: www.fpcr.co.uk  
masterplanning environmental assessment landscape design urban design ecology architecture arboriculture

J:\7200\7233\ECO\R&P Clean Power Application\QGIS 2.14\Plans\ES Plans\Bat Plans\7233-ES-8.5-01 Bat Transect Survey - April 2021.qgs